

**Prior Learning**

- Children have used different media to create Artwork
- Children have use pencils to shade work
- Children have made sculptures of different figures

**Non-negotiables**

To be able to draw a body in proportion

- Using sections to make the body in certain sections
- Add detail to different sections—fingernails to hands
- To be able to keep adding more detail to faces

**Artist link**

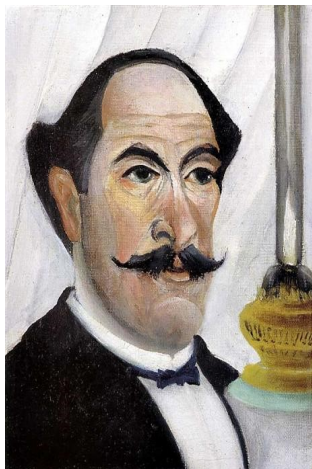
Henri Rosseau

Born—1844

Died—1910

Famous for—French impressionist artist

Famous for also being a customs officer



*Henri Rosseau*

**Key Facts**

- To understand the life of the Artist
- To be able to discuss key facts about the life of Henri Rosseau
- To understand the need to sketch before completing their work
- To

**Glossary of Vocabulary**

- Difference
- Portrait
- Landscape
- Imagination
- Sketch

